

# I AM LOOKING TO IMPROVE PROLIFICACY WHICH INDEX SHOULD I USE?



## THE BREEDER TAKES ULTRASOUND MEASUREMENTS



I'm looking for good replacement ewes for my flock. I'd like to improve the number of lambs born per lambing. Which index should I use to select ewes?

The **MATERNAL ULTRASOUND HIGHER PROLIFICACY INDEX (MAT-UHP)** is the best index to use for buying more prolific replacement ewes that have an ultrasound measurement evaluation. This index allows you to select more prolific ewes that will transmit good carcass quality traits to their lambs.

The **MATERNAL ULTRASOUND HIGHER PROLIFICACY INDEX (MAT-UHP)** is the best index to use for buying more prolific breeding stock that has an ultrasound measurement evaluation.

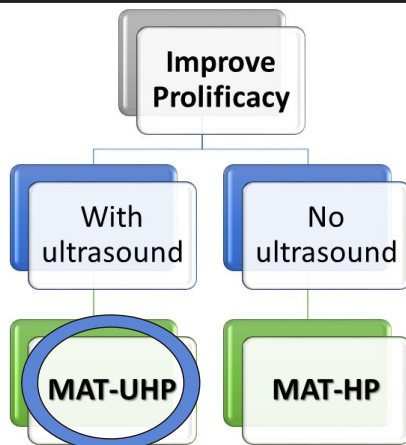
This index allows you to select more prolific rams with good carcass quality.

I'm looking for good rams to produce replacement ewes for my flock. I'd like to improve the number of lambs born per lambing. Which index should I use to select rams?



What is the benefit in taking these measurements on maternal breeds?

Don't forget that lambs' carcass quality comes both from the dam and the sire. This is true for terminal breeds, but also for maternal breeds, so there is benefit in doing ultrasound measurements for them as well. Maternal breeders ultrasounding their lambs aim to improve their ewes' and rams' muscularity to produce lambs with a better overall carcass quality. Carcass qualities are easily transferred from one generation to the next, so it is useful to use "top-scoring" animals on these traits to produce high-performing offspring.



DDD AIUK660S			
c Indexes			
Maternal		Maternal Higher Prolificacy	
MAT	MAT-U	MAT-HP	MAT-UHP
13.99	18.45	7.11	13.03
96	97	95	97

Maternal			
Percentile	EPD	Accuracy	Percentile
12	0.02	7	49
97	0.13	43	17
98	0.57	41	74