

# I AM LOOKING TO IMPROVE PROLIFICACY WHICH INDEX SHOULD I USE?



## THE BREEDER DOES NOT TAKE ULTRASOUND MEASUREMENTS



I'm looking for good replacement ewes for my flock. I'd like to improve the number of lambs born per lambing. Which index should I use to select ewes?

The **MATERNAL HIGHER PROLIFICACY INDEX (MAT-HP)** is the best index to use for buying more prolific replacement ewes. This index allows selecting more prolific ewes with good maternal abilities.

The **MATERNAL HIGHER PROLIFICACY INDEX (MAT-HP)** is the best index to use for buying more prolific rams.

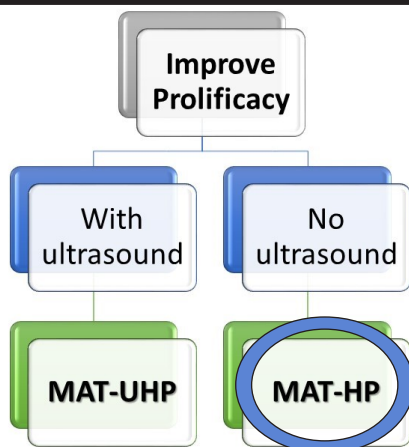
This index allows you to select rams that will improve the number of lambs born per lambing of his daughters, which will be used as replacement ewes in the flock.

I'm looking for good rams to produce replacement ewes for my flock. I'd like to improve the number of lambs born per lambing. Which index should I use to select rams?



What could be the benefit in taking these measurements on maternal breeds?

Don't forget that lambs' carcass quality comes both from the dam and the sire. This is true for terminal breeds, but also for maternal breeds, so there is benefit in doing ultrasound measurements for them as well. Maternal breeders ultrasounding their lambs aim to improve their ewes' and rams' muscularity to produce lambs with a better overall carcass quality. Carcass qualities are easily transferred from one generation to the next, so it is useful to use "top-scoring" animals on these traits to produce high-performing offspring.



Prolificacy Indexes			
Maternal		Maternal Higher Prolificacy	
MAT	MAT-U	MAT-HP	MAT-UHP
13.99	18.45	7.11	10.03
96	97	95	97

Percentile	Maternal		Percentile
	EPD	Accuracy	
12	0.02	7	49
97	0.13	7	17
98	0.57	7	74
96			