

I'M LOOKING TO IMPROVE MATERNAL QUALITIES WITHOUT INCREASING MY NUMBER BORN



THE BREEDER TAKES ULTRASOUND MEASUREMENTS



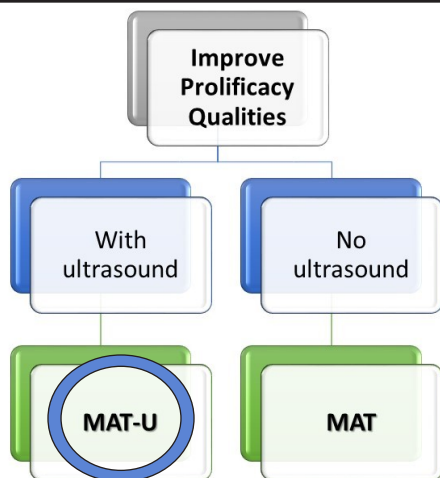
I'm looking for good, non-prolific maternal replacement sheep for my flock. I'd like to have ewes with better maternal qualities, but I do not want more lambs per lambing. *Which index should I use to select ewes?*

The **MATERNAL ULTRASOUND INDEX (MAT-U)** has been created to simultaneously improve maternal traits and carcass qualities. This index allows you to select ewes with strong maternal traits and carcass qualities.

The **MATERNAL ULTRASOUND INDEX (MAT-U)** was designed to improve both ewes' maternal traits and carcass quality.

This is the best index to use in buying rams with strong maternal traits and carcass qualities.

I'm looking for good non-prolific maternal replacement sheep for my flock. I'd like to have ewes with better maternal qualities but I do not want more lambs per lambing. *Which index should I use to select rams?*



Genetic Indexes					
Paternal	Maternal			Maternal Higher P	
CARC	MAT	MAT-U	MAT-HP		
28.97	13.99	18.45	7.11		
99	96	97	95		

EPD	Direct			Maternal		
	Accuracy	Percentile	EPD	Accuracy	Percentile	
-0.05	10	12	0.02	7	49	
0.51	90	97	0.13	43	17	
2.05	74		0.57	41	74	
2.5	94					
2.01	95					
62	96					