

I'M LOOKING TO IMPROVE MATERNAL QUALITIES WITHOUT INCREASING MY NUMBER BORN



THE BREEDER DOES NOT TAKE ULTRASOUND MEASUREMENTS



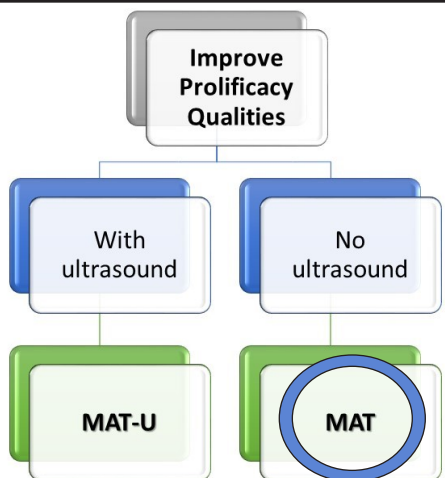
I'm looking for good, non-prolific maternal replacement sheep for my flock. I'd like to have ewes with better maternal qualities, but I do not want more lambs per lambing. *Which index should I use to select ewes?*

The **MATERNAL INDEX (MAT)** is the best index to use for selecting sheep with better maternal abilities.

The **MATERNAL INDEX (MAT)** improves ewes' milk production and lambs' growth to get heavier lambs at weaning.

These rams will improve maternal qualities of his daughters, which will be used as replacement ewes in the flock.

I'm looking for good non-prolific maternal replacement sheep for my flock. I'd like to have ewes with better maternal qualities but I do not want more lambs per lambing. *Which index should I use to select rams?*



Genetic Indexes					
Paternal			Maternal		
AIN	CARC		MAT		MAT-U
62	28.97		13.99		18.45
	99		96		97

	Direct		Maternal	
	EPD	Accuracy	EPD	Accuracy
Survival	-0.05	12	0.02	7
Weight	0.51	97	0.13	43
Wt.	2.05	74	0.57	41
30d	2	94	96	